

Sharpen®

Herbicide

FACT SHEET

Broadleaf weed control in apple and pear orchards

Sharpen® is a very fast-acting, versatile broadleaf herbicide. In tank-mixes with glyphosate, it speeds up control and extends the spectrum to include the toughest broadleaf weeds. Unlike other Group 14 herbicides, Sharpen has systemic activity that strengthens its capacity to help leave orchards weed-free.



- Exceptional control of the most prevalent broadleaf weeds.
- Very fast knockdown.
- Highly effective at a low application rate.
- Systemic activity promotes more robust control.
- Excellent tank-mix compatibility with other herbicides.
- No need to decontaminate the spray rig.
- Favourable environmental, toxicological and ecotoxicological profiles.

Mode of action

Group 14 Protoporphyrinogen-oxidase Inhibitors (PPO's)

Crop registrations

Apples

Pears

DO NOT use under any other perennial tree or vine crop

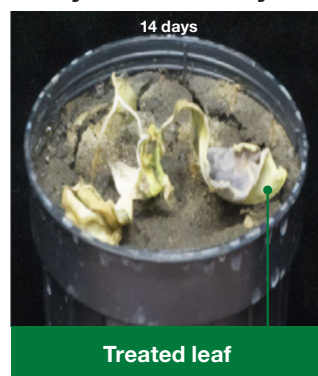
WHP

Do not graze or cut for feed within 28 days after application

Weeds controlled:

Annual poa
Clover
Dandelion
Docks
Mallows
Plantains
Ryegrass
Tall willow herb

Sharpen has contact and systemic activity



BASF
We create chemistry

Sharpen®

Herbicide

FACT SHEET

How and when to use Sharpen in pipfruit orchards

Rate

Sharpen 25 g/ha + ethoxylated seed oil (ESO) + an approved glyphosate formulation at label rates.

Method

Apply under apple and pear trees that have mature (lignified) bark. Avoid contact to foliage and other green plant tissue. Follow the precautions for drift on the glyphosate label. DO NOT use under any other perennial tree or vine crop. Apply this product carefully. Spray drift may cause serious damage to desirable plants.

Timing

Use no more than 3 times per season under trees, with at least 21 days between applications.

Resistance management

Resistance to Sharpen and other MoA Group 14 herbicides could develop through excessive use. Use strictly in accordance with label instructions and in a herbicide programme that incorporates other MoA groups. Refer to the NZCPR website www.resistance.nzpps.org for more detailed information.



Scan this QR code for more information,
or contact your local BASF representative on
0800 932 273.

ALWAYS READ AND FOLLOW LABEL DIRECTIONS BEFORE USING ANY PRODUCTS.

This fact sheet is intended as general advice. The information submitted in this publication is based on current BASF knowledge and experience.

ACVM registration no: P008391 © Copyright BASF 2025 ® Registered trademark of BASF. AU55-P00001391 0925

 **BASF**

We create chemistry