

# Kumulus® DF

Fungicide

Kumulus DF Q&A



Why use Kumulus® DF?



- BioGrow certified
- Easy handling and mixing
- Micro-granular formulation that flows readily
- Reduced dust
- Dissolves in water rapidly
- Erinose mite control
- Powdery mildew resistance breaker



Product type?



Protectant fungicide



Active ingredient/formulation?



800 g/kg sulphur water dispersible granule



Application rates?



Crops	Diseases controlled	Application rate	Remarks
Apple	Powdery mildew	100 - 200 g per 100 L	May be applied from bud movement to harvest, however, use before December as may affect fruit finish - DO NOT apply in mixture with captan - DO NOT apply to sulphur sensitive varieties eg Kidds Orange Red, Cox's Orange Pippin or Red Delicious - DO NOT apply in temperatures above 25°C - DO NOT apply to pears
Grapes	Powdery mildew	150 - 300 g per 100 L	Apply at bud swell and repeat at 10-14 day intervals as required - Use higher rates when disease is evident - Erinose mites will also be controlled
Peas	Powdery mildew	100 - 200 g per 100 L	Apply when conditions favour disease and repeat as necessary - Use the higher rate when infection has already occurred
Peaches, Plums & Nectarines	Rust	100 - 200 g per 100 L	Apply at fruit set and repeat at 21 day intervals until harvest Use higher rate when conditions favour disease - DO NOT apply to apricots
Roses	Powdery mildew	200 - 300 g per 100 L	Apply on 14-day schedule using higher rate during periods of severe disease pressure - DO NOT use in mixture with maldison
Tamarillos	Powdery mildew	100 - 200 g per 100 L	Apply on a regular 10-14 day schedule throughout the growing season
Vegetables	Powdery mildew	100 - 300 g per 100 L or 2-3 kg/ha	Apply at 10-14 day intervals during periods that favour infection Use the high rate when infection pressure is high



Water rate & concentrate spraying?



Sufficient to achieve full coverage  
If concentrate spraying adjust dilutions rates accordingly

# Kumulus® DF

Fungicide

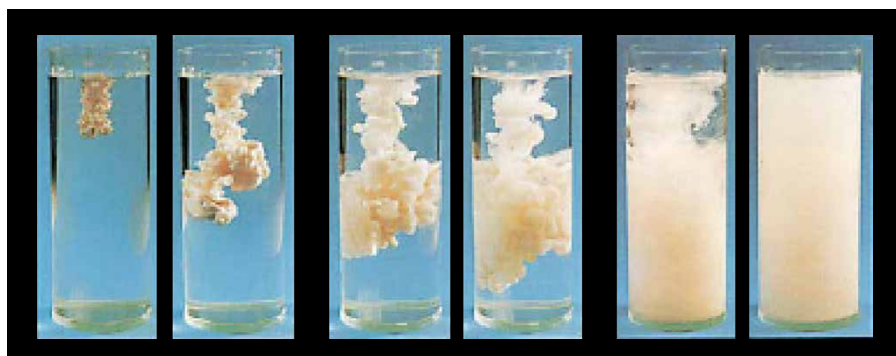
Kumulus DF Q&A

**BASF**

We create chemistry

<b>Q</b>	<b>Pack size?</b>	<b>A</b>	15 kg bags (Agrecovery® friendly)
<b>Q</b>	<b>Resistance management?</b>	<b>A</b>	Kumulus DF is a Group M2 fungicide
<b>Q</b>	<b>Withholding period?</b>	<b>A</b>	Nil days all crops. Avoid visible residues
<b>Q</b>	<b>Compatibility?</b>	<b>A</b>	Compatible with most insecticides, fungicides and foliar fertilisers DO NOT use in mixtures with captan, maldison, spraying oils or formulations containing mineral oils DO NOT apply within 3 weeks of an oil spray
<b>Q</b>	<b>Mixing?</b>	<b>A</b>	Spray tanks with modern venturi and mechanical agitation systems, ¾ fill the tank with water then add the required amount of Kumulus DF directly into the spray tank with agitators running. In spray tanks with less effective bypass agitation, Kumulus DF should be pre-mixed with water in a bucket before adding to the partly filled spray tank. When used in mixtures pre-dilute in the additive product prior to its addition to spray tank with agitators running, first add Kumulus DF then the additive product and use immediately.

## Kumulus DF rapidly disperses in water... and stays in suspension



For more information on Kumulus DF, visit [crop-solutions.basf.co.nz](http://crop-solutions.basf.co.nz) or call **0800 558 399**

**ALWAYS READ AND FOLLOW LABEL DIRECTIONS BEFORE USING ANY PRODUCT IN THIS FACT SHEET.**

© Copyright BASF 2019. Kumulus® DF is a registered trademark of BASF. 212668 1022